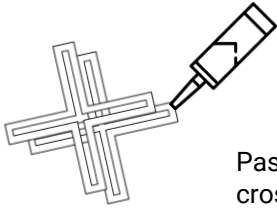


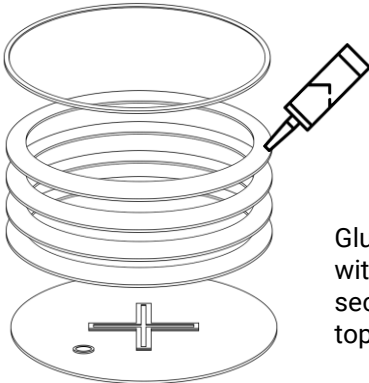
Memory Catcher – Assembly Guide

1



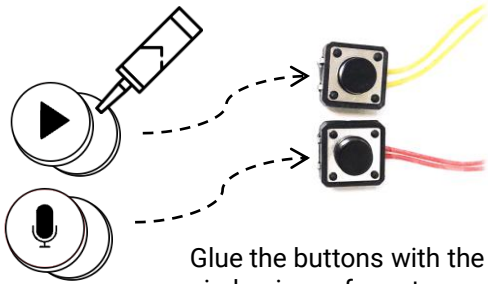
Paste the 2 pieces of cross frame together using adhesive glue.

3



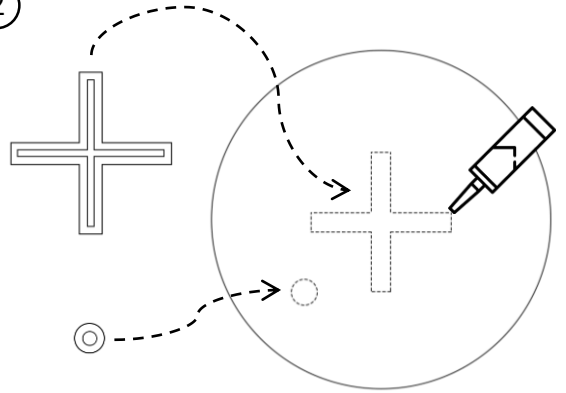
Glue the base with the mid sections and the top rim.

4

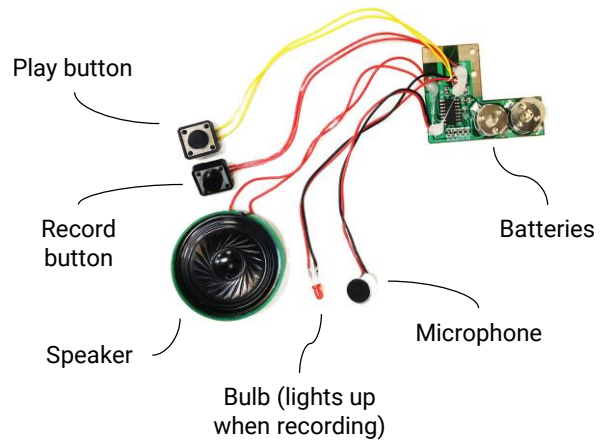


Glue the buttons with the circle pieces for extra thickness and then onto the sound recorder.

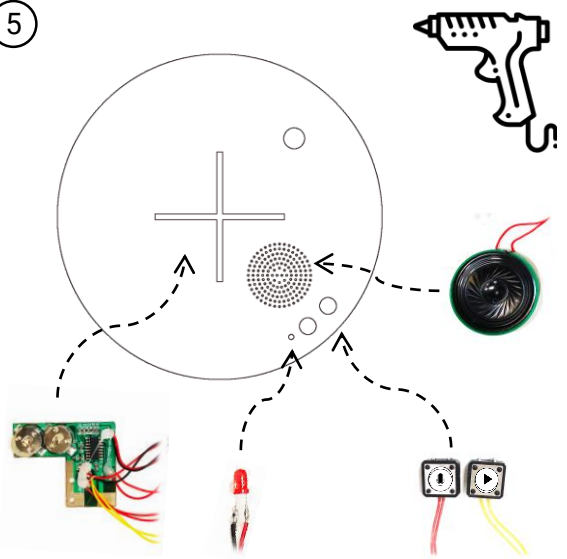
2



Glue the parts onto the engraved lines on the base.



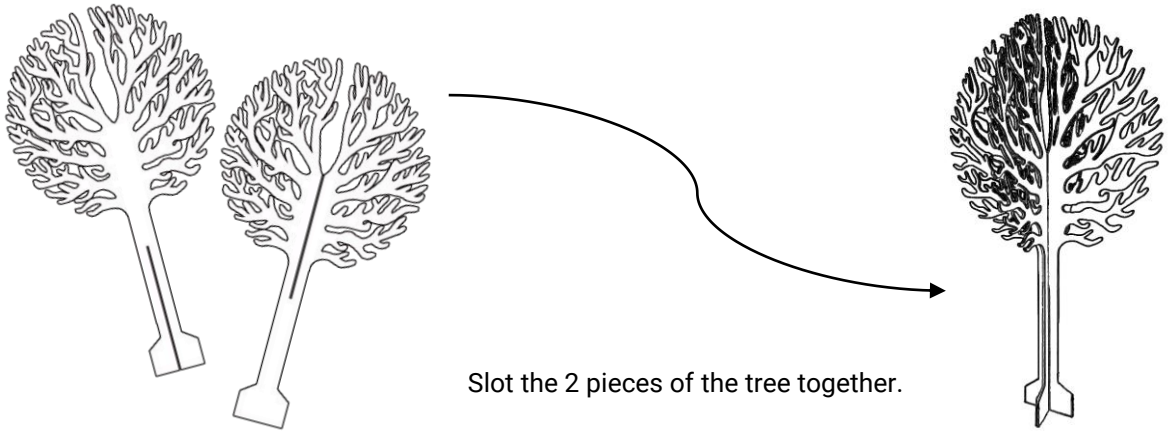
5



Attach the following parts of the sound recorder to bottom of the top cover using a hot glue gun.

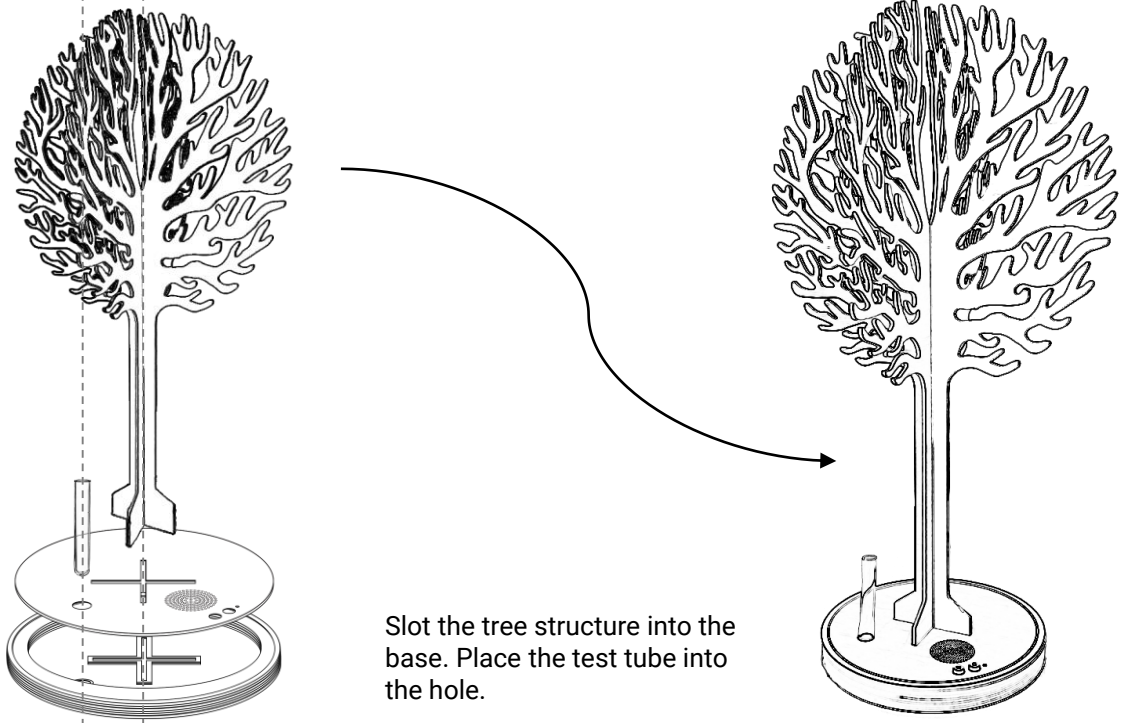


6



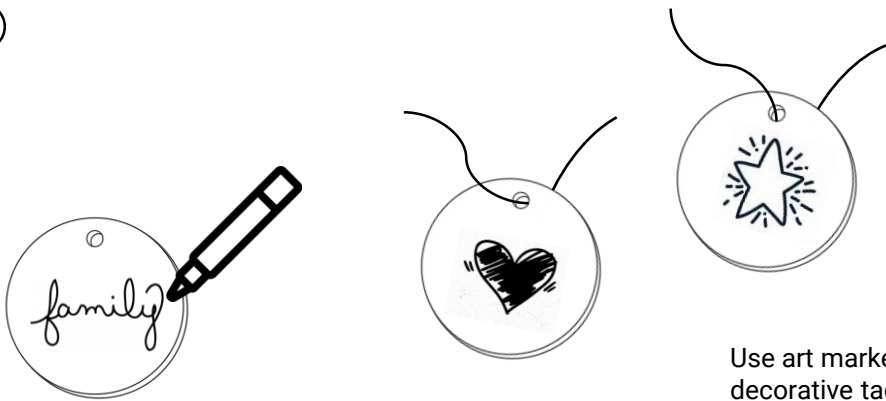
Slot the 2 pieces of the tree together.

7



Slot the tree structure into the base. Place the test tube into the hole.

8



Use art markers to write or draw on the decorative tags. Tie a string on each tag to hang on the branches.